

# STUDIO 3



**COLOUR SOUND**  
**EXPERIMENT** Ltd

Here at Music Bank we have been busy modifying our 3 Rehearsal rooms into Covid business compliant live streaming, recording and session spaces.

Each studio now has a fully equipped, modular and scalable lighting, video and multi camera system ready to go. FOH, Monitor and Broadcast mixing are taken care of in house. Dedicated leased line broadband along with Source Connect is available if needed, and a suite of breakout rooms including dressing room, artist lounge, manager's office, interview rooms and a kitchenette are part of each studio. As always our huge range of top quality backline is available at great discounted studio rates.

For more information please contact [jimm@musicbank.org](mailto:jimm@musicbank.org)







**Check out the full 360 image of the room here!**

<https://kuula.co/share/collection/7lj6j?fs=1&vr=0&sd=1&thumbs=1&chromeless=0&logo=0>

## Audio

The studio comes with a house sound engineer, fully set up to accommodate FOH, monitors and stream/broadcast mixes. Choice of the following systems;

Digico SD12 with Waves DMI card  
SD Rack with 32bit I/O cards. 56 in/ 24out. + 1x AES output card  
Opticore connectivity

Allen and Heath D-Live s7000  
XLR out, 2 x AES in, 3 x AES out, 2 x IO ports  
DM48 MixRack: 48 x mic/line inputs, 24 x line outputs  
3 x IO ports  
Dante card that fits in surface/rack 64ch in/out

Avid Venue Profile  
Avid Stage Rack. 48 in/24 out  
Fully Waves Compatible

## Monitoring

24 x TurboSound TFM450 floor wedges  
2 x TurboSound TA500DP Sidefill Tops with TSW 218 DP Subs  
2 x TMS 3's Sidefill  
2 x Turbosound THL2 Highlight series SideFill  
(Sennheiser IEM systems available at additional hire cost)

## Microphones

5 x Shure SM57	4 x Sennheiser e609	6 x AKG 414
3 x Shure b57a	2 x Sennheiser MD421	6x AKG se300B
4 x Shure SM58	1 x Sennheiser e902	1 x Audix OM6
5 x Shure b58a	3 x Sennheiser e904	2 x Audio D2
2 x Shure b52	2 x Sennheiser e905	
6 x Shure b56	2 x Sennheiser e906	18 x BSS AR133 D.I. Box
3 x Shure sm94	3 x Sennheiser e914	
2 x Shure KSM137	1 x Sennheiser e935	

## Backline

As always our huge range of world class backline and risers are available in house to hire fully serviced, maintained and PAT certificated at discounted studio rates.



## Camera System

For shooting, we have the latest LED lighting and 4K Sony FS7 Cine cameras with lenses that deliver cinema quality. These are industry standard for high end TV.

[https://pro.sony/en\\_GB/products/handheld-camcorders/pxw-fs7](https://pro.sony/en_GB/products/handheld-camcorders/pxw-fs7)

Additionally, we have minicams and tracking for the front of the camera and we can supply camera operators. This package has been designed and supplied in partnership with 4Hundred, and is used on all their BBC1 shoots.

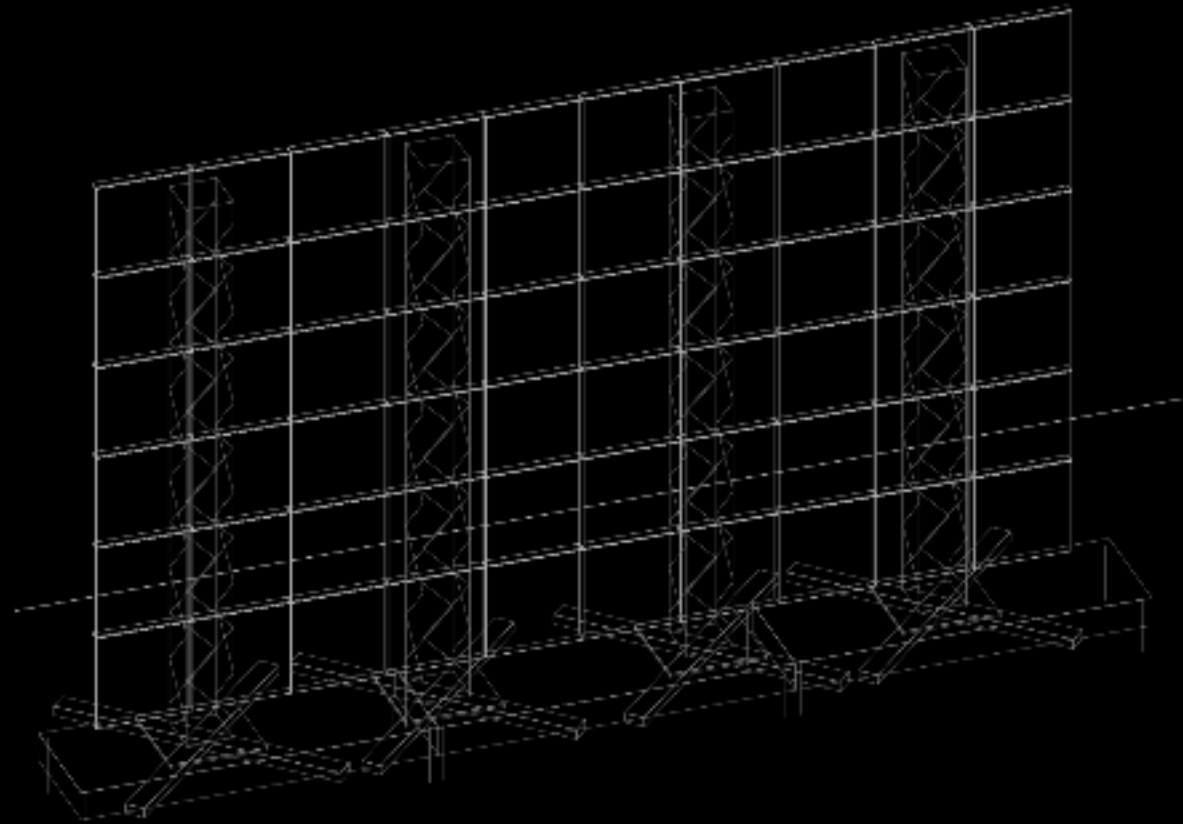
If you require editing, this can be achieved using their Avid Symphony grading suite and they can produce a 10-15 minute video over a day with editing services supplied at a daily rate.



## Video -LED Screen

2.6mm Unliumen  
5m by 3m

This screen is set up in this studio and is included in quoted hire costs:



## Video Spec

PIXEL MAP - [LINK](#)

Video Technical Drawing - [LINK](#)

Signal path - [LINK](#)

## Media Servers / Content creation / XR Studio

Resolume, Hippotiser or Catalyst available in house, for any content XR or other video integration questions, please contact [h@coloursound.co.uk](mailto:h@coloursound.co.uk)

## Lighting

House Flown & Floor lighting options available upon request

In this studio, we have put in the infrastructure to add lighting tailored to the artist or band. Colour Sound's warehouses are based 2 minutes away, with a lighting stock of over 1000 moving heads and a wide array of generics. We would be able to get the rig fully set up before you arrive on site, for anything you'd like to add to the starting framework.

## Fixed Lighting Infrastructure

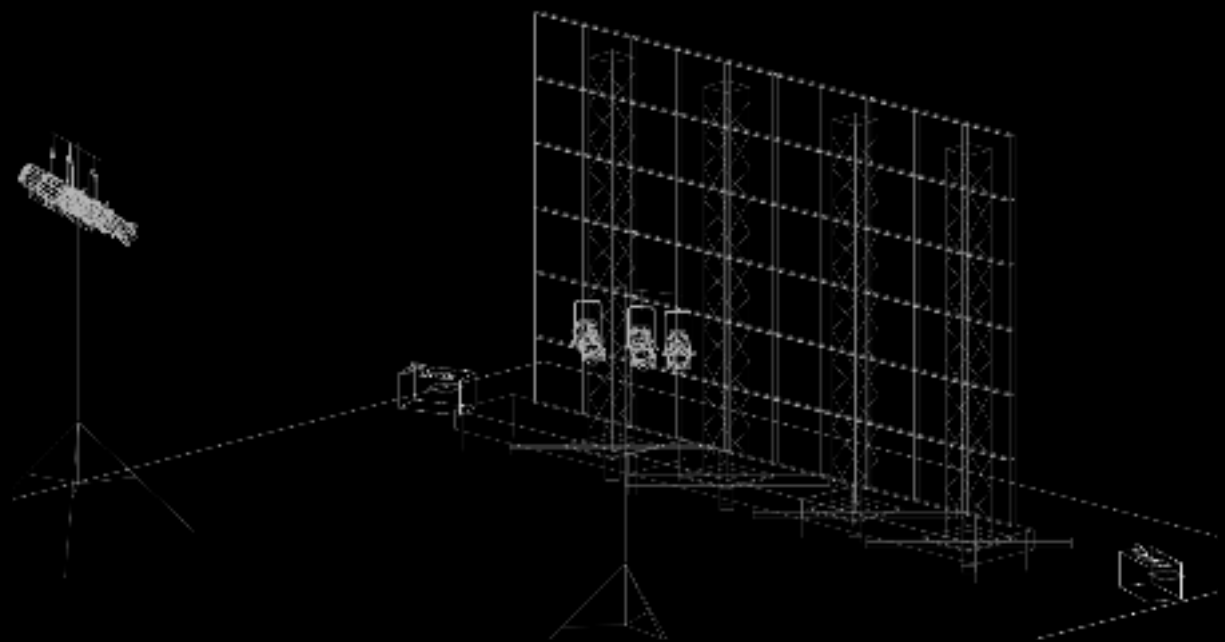
Power Distribution

Luminex Network & DMX distribution

1 x Avolites Tiger Touch 2 / Grand MA 3 Full size or Lite / Chamsys MQ500 ([link](#) to other desks in stock)

6 x ETC source four Lustr Mk 2

2 x Manfrotto Lighting Stands



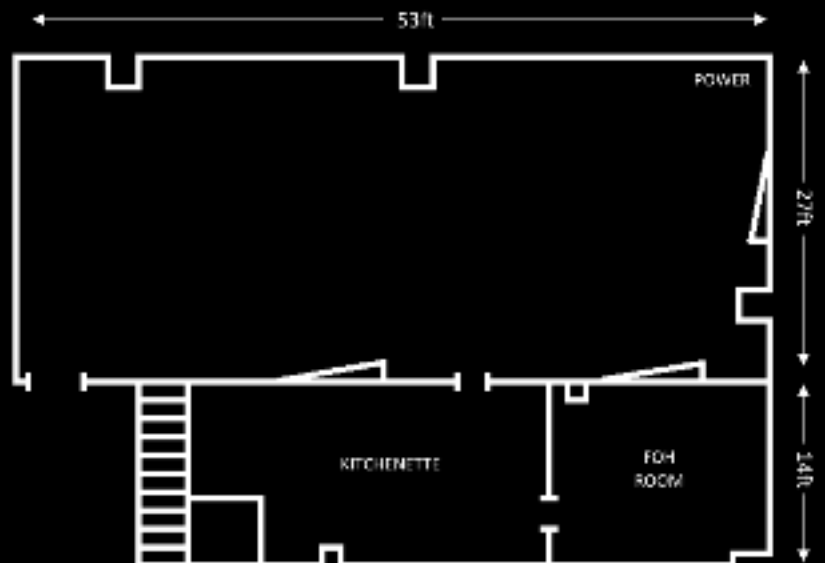
## SFX

Lasers, Confetti, Co2 jets and pyrotechnics all available on site, please contact [h@coloursound.co.uk](mailto:h@coloursound.co.uk) with any questions or requests

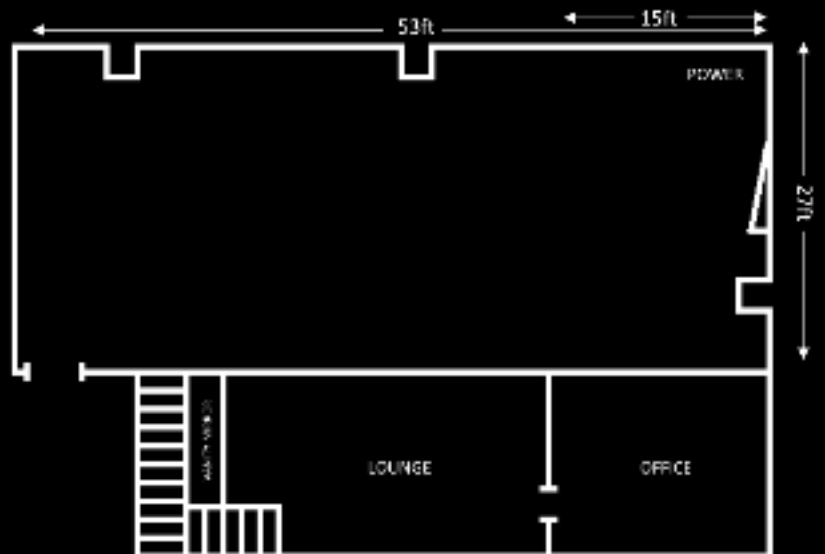




STUDIO 3 DOWNSTAIRS



STUDIO 3 UPSTAIRS



## Layout and Dimensions

Full Spec sheet for studio 3 [link](#)

Full Lighting & Video Spec for studio 3 [link](#)



## Green Screen

Green Screen options available upon request



## Storage Cage Options Available

Our vast suite of secure equipment storage is available long or short term should you require to keep any gear with us in house.

## Contactless Catering

In addition to onsite kitchen facilities, we can also offer a fully covid compliant “contactless” catering service from industry leading catering company Eat to The Beat.



## Transport

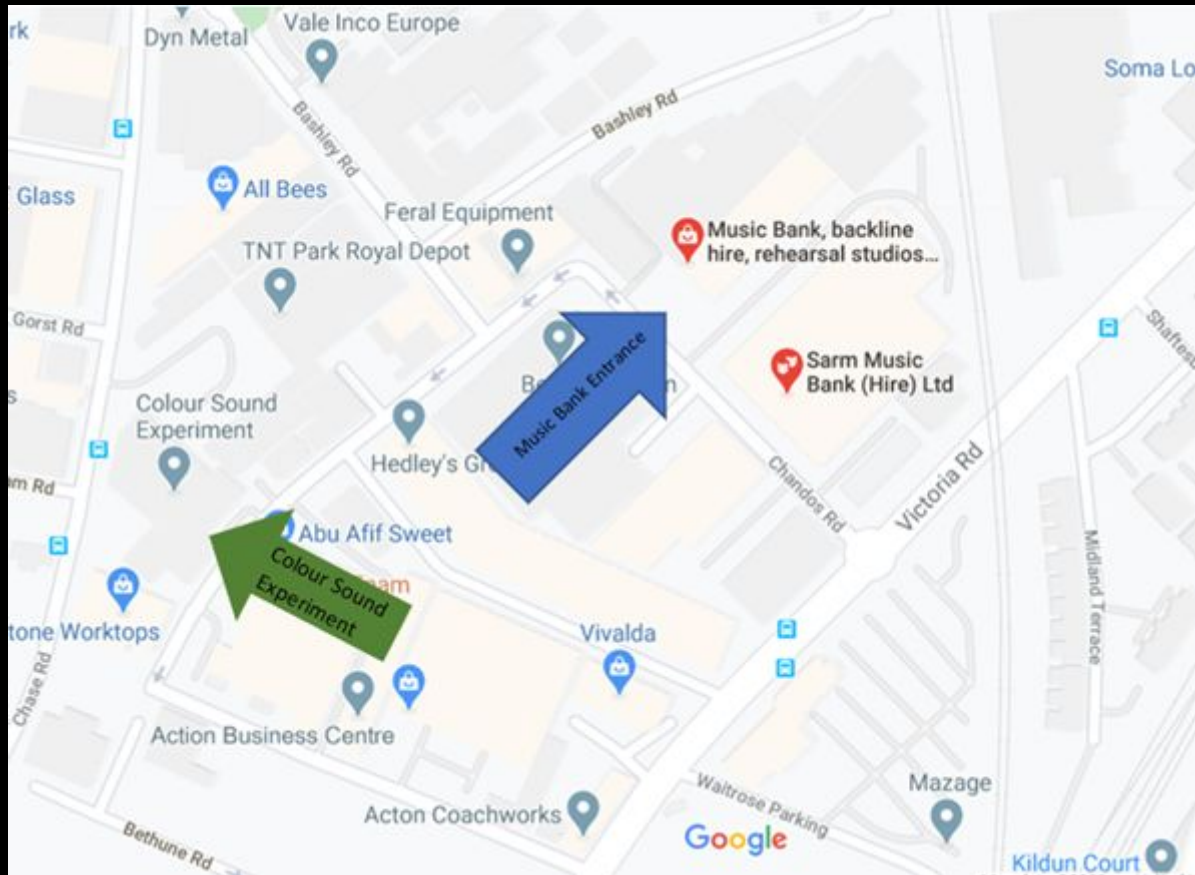
If you require transport to and from the venue for artists and crew, we can provide a socially distanced chauffeur service.

We can also provide a range of vans and articulated vehicles should you require any equipment to be transported to the studios along with local crew for loading/unloading.



## Finding us

Music Bank, Unit 4, Chandos Industrial Estate, Chandos Rd, London NW10 6NF  
0207 252 0001



Music Bank  
Unit 4, Chandos Industrial Estate, Chandos Rd, London NW10 6NF